

Information about changes to some of our hospital services

1



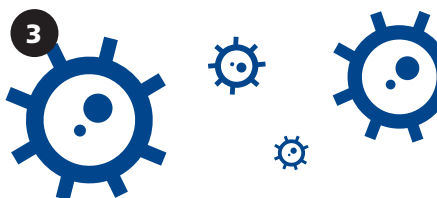
We are making plans about how our hospitals will work this winter.

2



We need to do this so we can carry on giving people the care they need in a safe way.

3



We made some changes earlier this year because of COVID-19 (Coronavirus).

4



We did this so we could make our hospitals safe so people do not catch COVID-19 (Coronavirus) while they are in hospital.



5

We also wanted to be able to do things like care for people who have cancer or need special tests.



6

We have been thinking about how our hospital services can work if more people catch COVID-19 (Coronavirus) this winter.

What we plan to do until March 2021



7

We moved Emergency General Surgery to Gloucestershire Royal Hospital in April 2020. It will stay like this until March 2021.



8

Cheltenham General Hospital Emergency Department (sometimes called A&E) changed to a Minor Illness and Injury Unit.

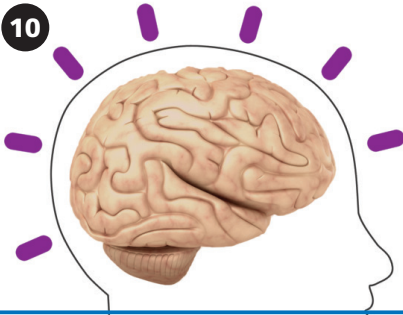
This is where you can go for help if your injury is not serious and you do not need help from the Emergency Department.



9

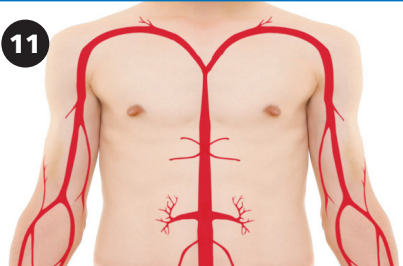
All 999 calls go to Gloucestershire Royal Hospital. This will stay the same until March 2021.

10



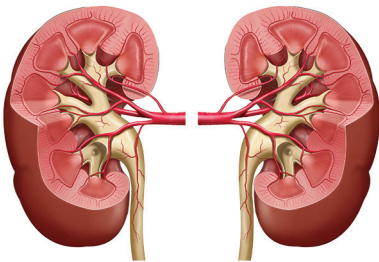
People who have had a stroke go to Gloucestershire Royal Hospital at first, they might then go to Cheltenham General Hospital or The Vale Hospital after a couple of days to carry on getting help to get better.

11



Operations on blood vessels, called Vascular Surgery is at Gloucestershire Royal Hospital.

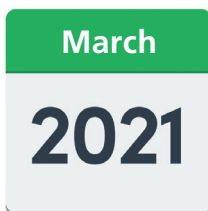
12



If someone has an **emergency** with their bladder (where their wee is stored) or their kidneys, they go to Gloucestershire Royal Hospital.

If someone needs planned treatment for their bladder or kidneys, they go to Cheltenham General Hospital. This is called **Urology**.

13



These changes have already been happening and will carry on until March 2021.

14



The Vale Community Hospital Minor Injuries Unit will open again from October.

10am – 6pm

Cirencester, Stroud, North Cotswold, and Lydney Minor Injuries Units will be open longer.
8am – 8pm

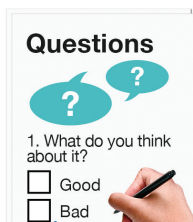
Tewkesbury Community Hospital will be open from **8am - 8pm**

15

A white rectangular sign with the word "Closed" written in bold black letters, hanging from a chain.

The Dilke Memorial Hospital Minor Injuries Unit will stay closed until March 2021.

16



We will think about if we need to make these changes for longer than March 2021 when we see what happens with COVID-19 (Coronavirus) during the winter.

If you have any questions you can contact:

The Communications Department

✉ ghn-tr.comms@nhs.net