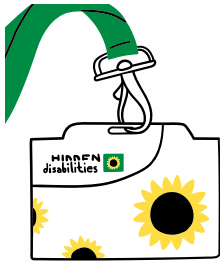


DO YOU HAVE A DISABILITY OR LONG TERM HEALTH CONDITION PEOPLE CAN'T SEE?

DO YOU FEEL YOU HAVE BEEN TREATED UNFAIRLY BECAUSE PEOPLE CAN'T SEE YOUR CONDITION?



WE ARE DOING RESEARCH ON NON VISIBLE DISABILITIES AND WE WANT TO HEAR FROM YOU

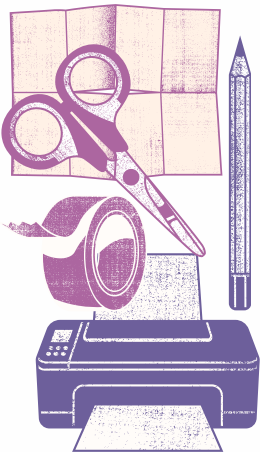


WHO CAN TAKE PART?

Anyone over 18, living in Gloucestershire with a non-visible disability. This is a disability or health condition that is not immediately obvious.

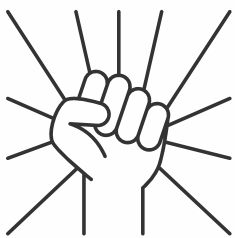
WHAT WILL I HAVE TO DO?

- Attend 4 workshops at Inclusion Gloucestershire's office, where you will make a handmade magazine, recording your experiences, known as Zines. Reasonable adjustments and alternative ways to participate will also be offered, for example creating your zine from home.
- Zines can be made by anyone, you do not have to be an artist.
- The workshops will involve a chat about ableism and what it is, learning about zines and then making a zine about your experiences of ableism.



WHY SHOULD I TAKE PART?

- You will help our understanding of what is known as ableism and how it affects people
- You may feel empowered or relieved to tell your story
- The opportunity to share your experiences with people who can make changes



Email: research@inclusion-glos.org

Phone: 07517 994765